



Worcestershire  
Local Enterprise Partnership

Appendix 2

# Worcestershire LEP Review

---

Mark Stansfeld, Chair &  
Ian Edwards, Growth Plan Project Manager

# Background



- A partnership between the public, private, education and third sectors
- Replaced the Regional Development Agencies in 2010
- 39 nationally covering all of England
- Responsible for developing and delivering the Strategic Economic Plan across partners.
- Focus on supporting private sector growth and creating jobs
- Conduit for European and Local Growth Funds

# The State of the County



- Significant GVA growth in the last 5 years (3<sup>rd</sup> nationally)
- Poor productivity for each hour worked within the county (£25.39 vs. nationally average £30.10)
- Very high rate of employment at 78.3%, (regional 70%, national 72.4%)
- Low average annual workplace salary at £23,977 (regional £24,920, national £27,487) Average resident salary is significantly higher at (£25,431)
- 74% of people who live the County – work in the County.
- Skill levels within the County are broadly on par with national averages
- House prices in Worcestershire are lower than the national average (median price of £170,996)
- Quality of Life Surveys – Worcester in top ten best places to live

# Our Vision



*“To build an internationally recognised, highly competitive, innovative business location with better productivity and sustainable economic growth.”*

# Strategic Economic Plan



## So what's in the SEP? Our Place



### Four game-changers

- ▶ Redditch Eastern Gateway
- ▶ South Kidderminster Enterprise Park
- ▶ Worcester Growth Corridor
- ▶ Malvern Hills Science Park

- Advanced manufacturing
- Agri-tech
- Cyber security, defence & IT

three key sectors



### Why?

"..there's an acute shortage of business accommodation and land in the county."

DTZ research



£2.9 billion increase in GVA\*

\* Gross Value Added: a measure of productivity.

T: 01905 672700

E: enquiries@wlep.co.uk

W: www.wlep.co.uk

@worcsLEP

#WorldClassWorcs



# Our themes and priorities



## OUR THEMES AND PRIORITIES

INCLUSION | RESEARCH/INTELLIGENCE  
ENVIRONMENT SUSTAINABILITY | TECHNOLOGY/INNOVATION



"Our ten year plan for **jobs, growth** and the **economy.**"

# Local Growth Deal



- Lord Heseltine report 'No Stone Unturned'
- In July 2014, Worcestershire LEP was awarded £54.2m
- Combined with other partner contributions the total investment package was £154.2m



# Key messages of Our PLACE funded projects ..



## **Worcester SIX**

- Game changer site, great M5 J6 location of 70 acres
- £5m LEP investment leading to the creation of up to 5500 high quality jobs
- Planning permission granted and work started on site
- Stoford actively seeking pre-lets





# WORCESTER SIX A BUSINESS PARK LIKE NO OTHER IN A GAME-CHANGING LOCATION

OFFICE / TECHNOLOGY / INDUSTRIAL / WAREHOUSING / MANUFACTURING

10,000 - 500,000 SQ FT (929 - 46,452 SQ M)

Worcester Six Business Park is a 72 hectare (178 acre) site set immediately to the east of the M5 motorway at junction 6.

The park has much to offer including access to one of the best road transport networks in the UK, including M5, M6, M42 and M50 traversing the country.

With outline planning consent for 1,500,000 sq ft (140,000 sq m) of manufacturing, offices, R & D and logistics buildings, Worcester Six is set to become one of the regions flagship developments in the world class location of Worcester.

[www.worcestersix.co.uk](http://www.worcestersix.co.uk)





# Key messages of Our PLACE funded projects ..



## **Worcestershire Parkway**

- £8.3m investment from LEP
- New station and rail programme to reduce journey time to London to less than 2 hours
- Also provides access to Cross Country trains to Bristol and Sheffield and beyond
- Stimulates housing and economic growth in the area.





**Worcestershire**  
Local Enterprise Partnership



---

T: 01905 672700 E: [enquiries@wlep.co.uk](mailto:enquiries@wlep.co.uk) W: [www.wlep.co.uk](http://www.wlep.co.uk)  [@worcsLEP](https://twitter.com/worcsLEP) #WorldClassWorcs

# Key messages of Our PLACE funded projects ..



## Malvern Hills Science Park

- Worcestershire County Council investment of £4m for Phase 4 development with LEP investing up to £4m in Phase 5
- All about technology companies - cyber, IT, defence – a sector we want to expand
- Full benefit with road and bridge improvements e.g. Southern Link Road improvements



# Key messages of Our PLACE funded projects ..



## Southern Link Road (A4440) Phase 3

- £12m investment from LEP
- New dual carriageway
- Connecting West Worcester and Malvern – speed up journey time



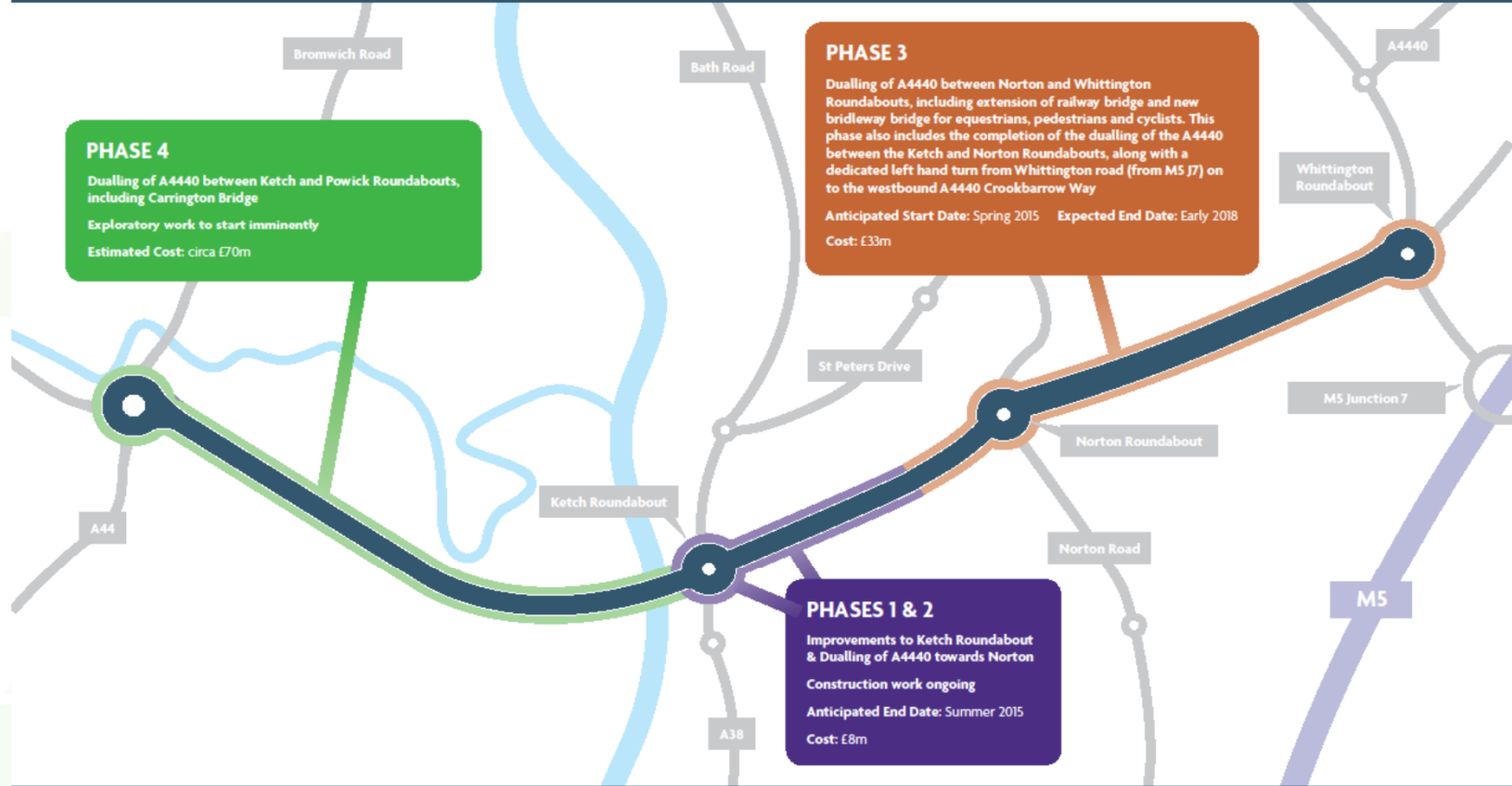


# A440 Southern Link Road Improvements

**PHASE 4**  
Dualing of A4440 between Ketch and Powick Roundabouts, including Carrington Bridge  
Exploratory work to start imminently  
Estimated Cost: circa £70m

**PHASE 3**  
Dualing of A4440 between Norton and Whittington Roundabouts, including extension of railway bridge and new brideway bridge for equestrians, pedestrians and cyclists. This phase also includes the completion of the dualing of the A4440 between the Ketch and Norton Roundabouts, along with a dedicated left hand turn from Whittington road (from M5 J7) on to the westbound A4440 Crookbarrow Way  
Anticipated Start Date: Spring 2015    Expected End Date: Early 2018  
Cost: £33m

**PHASES 1 & 2**  
Improvements to Ketch Roundabout & Dualing of A4440 towards Norton  
Construction work ongoing  
Anticipated End Date: Summer 2015  
Cost: £8m





# Key messages of Our PLACE funded projects ..

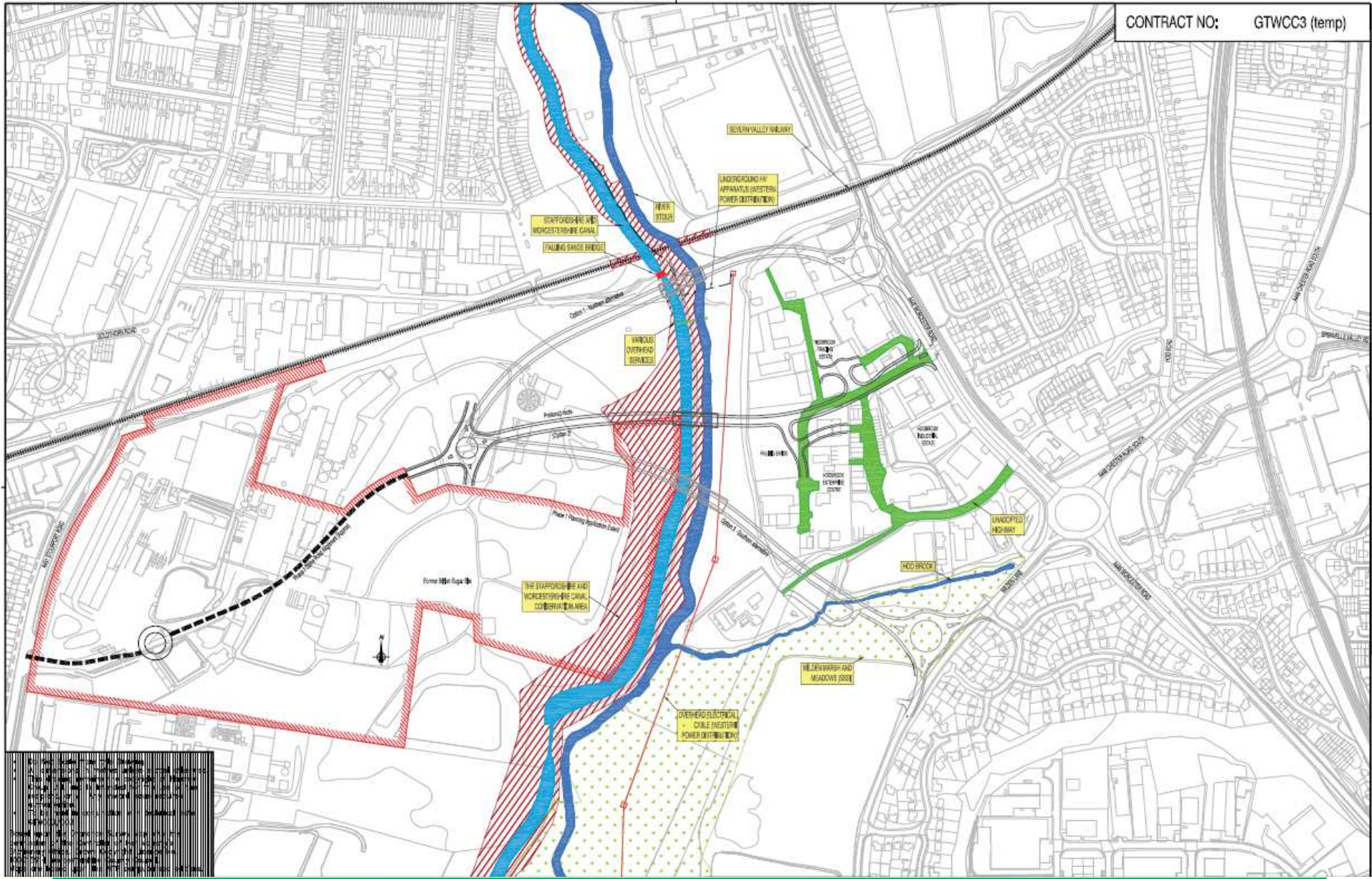


## Hoobrook Link Road

- £3.6m LEP investment (plus £2.5m from GBSLEP)
- Supports the delivery of the Kidderminster Enterprise Park



CONTRACT NO: GTWCC3 (temp)



T: 01905 672700 E: enquiries@wlep.co.uk W: www.wlep.co.uk @worcsLEP #WorldClassWorcs





# Key messages of Our PLACE funded projects ..



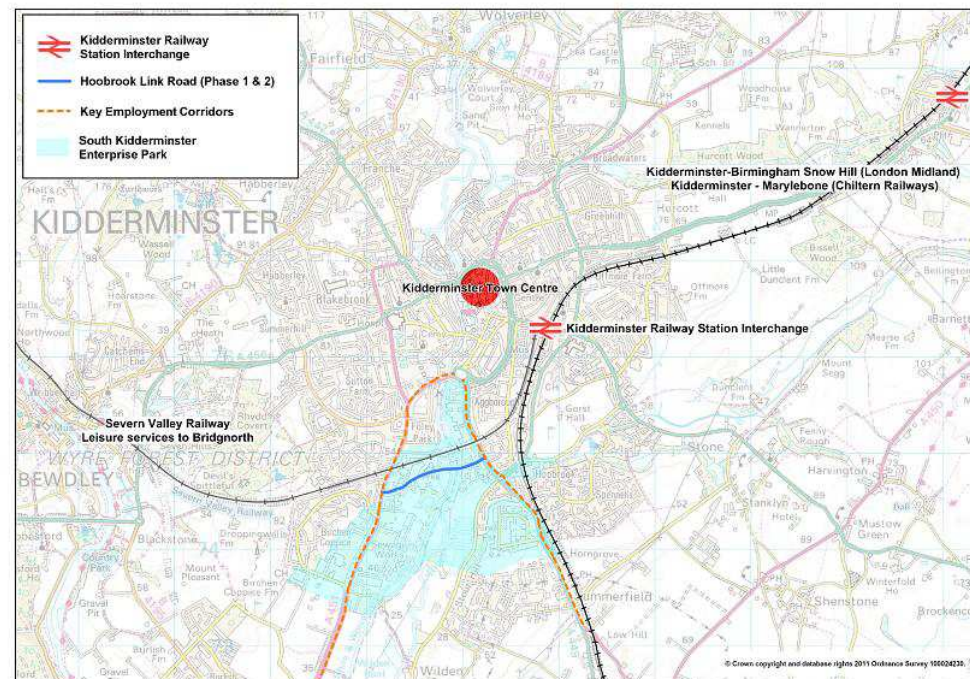
## **Kidderminster Railway Improvements**

- £4.3m scheme (£2.5m WLEP £1.8m GBSLEP) scheme being developed
- Improve bus/rail/pedestrian interchange facilities improving access to rail services from Kidderminster, Bewdley, Stourport on Severn and the wider Wyre Forest area.





# Worcestershire Local Enterprise Partnership



T: 01905 672700 E: [enquiries@wlep.co.uk](mailto:enquiries@wlep.co.uk)

# Key messages of Our PLACE funded projects ..



## Redditch Eastern Gateway



- Ongoing negotiations between developer and landowner
- Awaiting confirmation of local plans for Stratford, Bromsgrove and Redditch
- Expected planning application to be submitted September 2015.



# Key messages of Our PLACE funded projects ..



## **Flood Alleviation Programme**

- £4m WLEP investment tackling hotspots to reduce flooding and speed up journey times

## **Superfast Broadband**

- £2.39m WLEP investment to increase coverage to 95% of residential and business premises
- Significant focus on business take up





## Map showing anticipated deployment of fibre Broadband

This map provides an overview of the anticipated roll out of fibre Broadband in Worcestershire. This includes proposed commercial plans and anticipated deployment through the Superfast Worcestershire partnership by the end of June 2018.

Please be aware that this map is for early indicative purposes only - it is not accurate at the premise level and should not be considered as such.

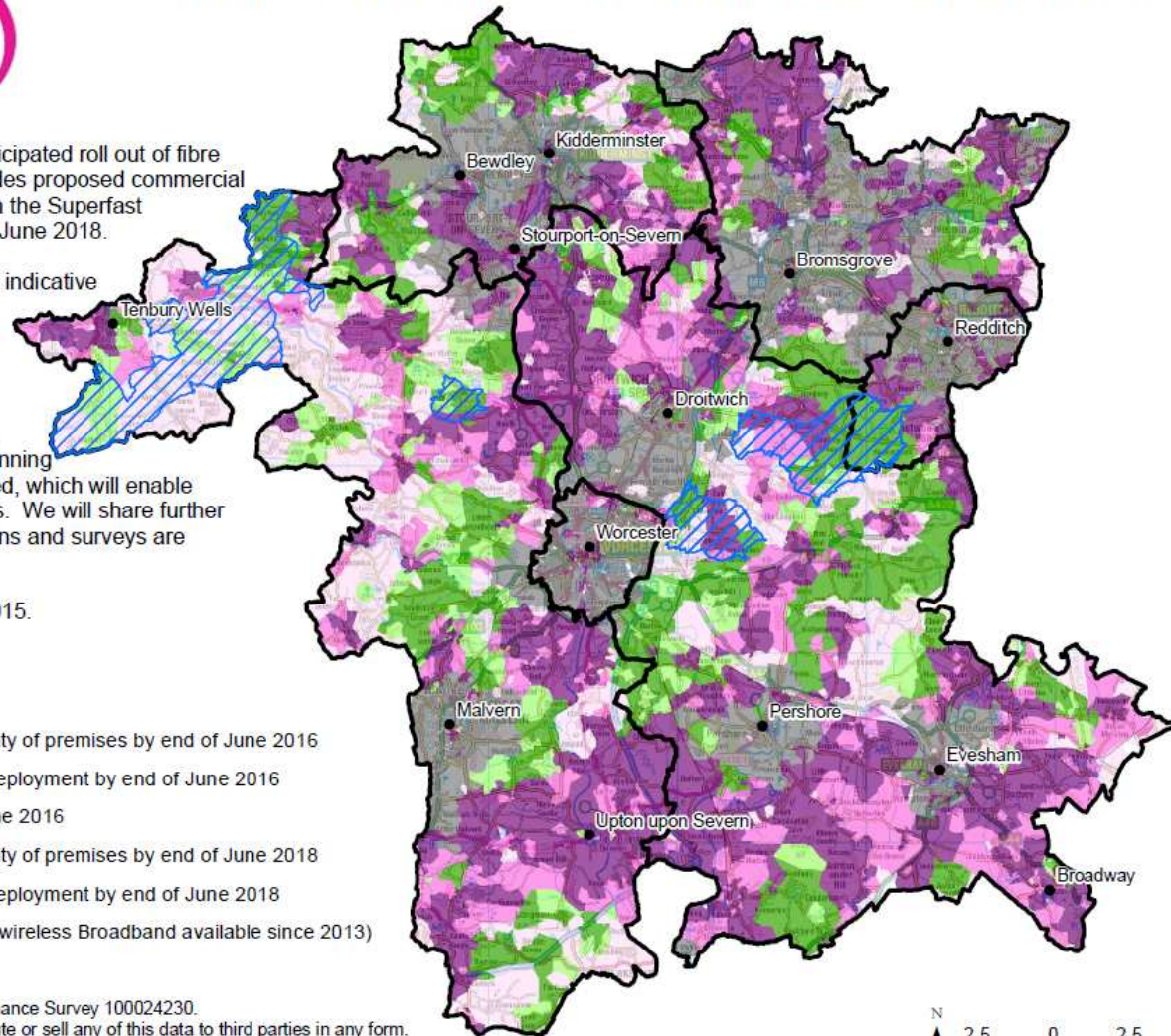
Anticipated deployment plans currently shown on this map are subject to change. More will be known after the intensive planning and surveying for each phase is completed, which will enable us to refine and confirm deployment plans. We will share further information on phased deployment as plans and surveys are confirmed.

Map based on information as at March 2015.

### Legend

- Commercial rollout
- Deployment expected to cover majority of premises by end of June 2016
- Partial coverage anticipated during deployment by end of June 2016
- At least 2Mbps to be available by June 2016
- Deployment expected to cover majority of premises by end of June 2018
- Partial coverage anticipated during deployment by end of June 2018
- Community Pathfinder project areas (wireless Broadband available since 2013)
- Worcestershire District boundaries

© Crown copyright and database rights 2015 Ordnance Survey 100024230.  
 You are not permitted to copy, sub-license, distribute or sell any of this data to third parties in any form.  
 Contains National Statistics data © Crown copyright and database right 2015





# Key messages of Our PEOPLE funded projects



## **Centre of Vocational Excellence**

- £800,000 WLEP investment in new facilities for engineering and manufacturing training led by Hereford and Worcester Group Training Association

## **Manufacturing Engineering Technology Academy (META)**

- £250,000 WLEP investment in new equipment for existing South Worcestershire College led project

## **Both:**

- Help address low level of engineering skills in County

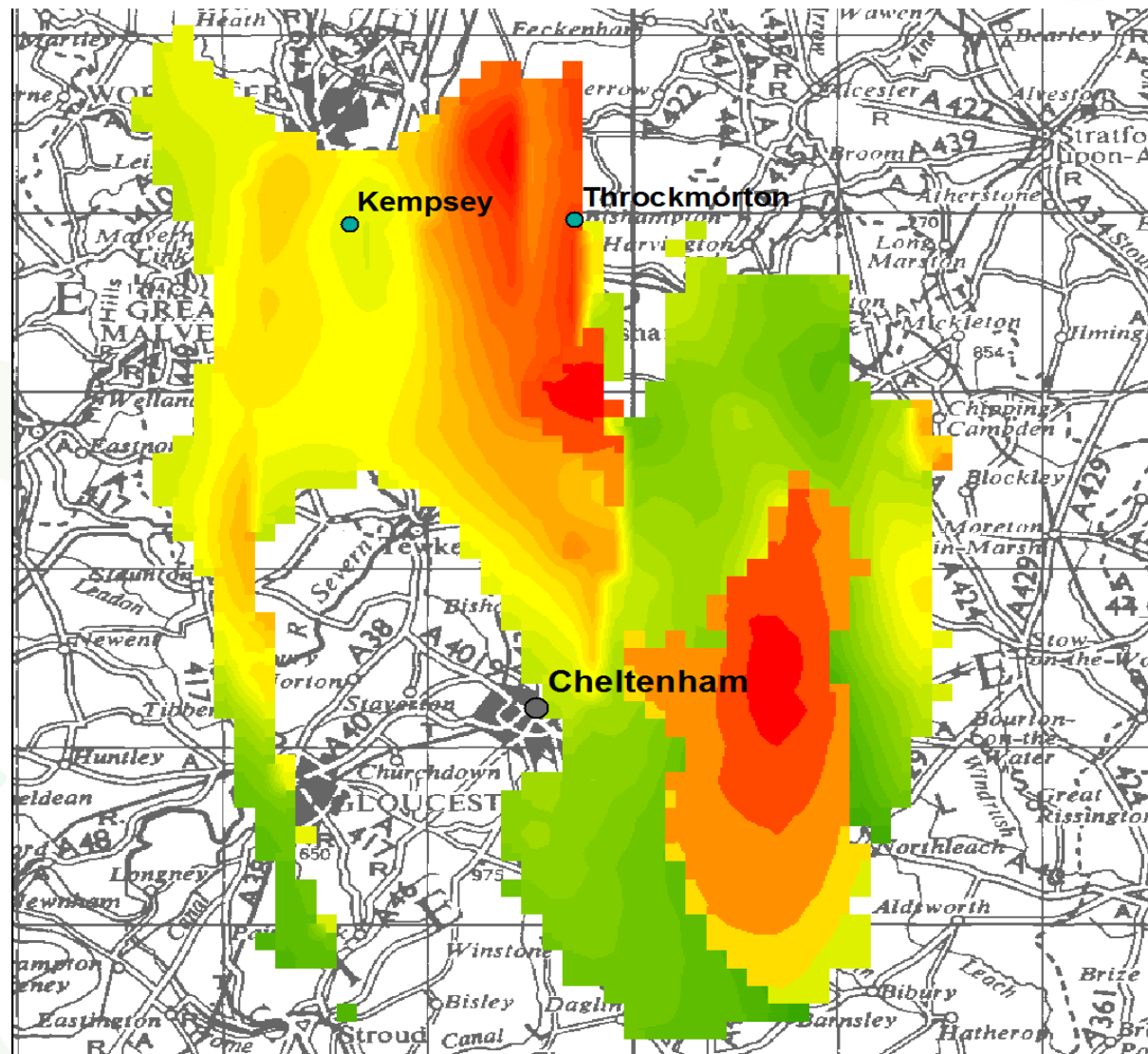


# Key messages for Our **BUSINESSES** projects...



## Geothermal Heat Pilot

- Feasibility study into geothermal potential within the Worcester Basin
- Candidate sites currently being identified





# Key messages for Our **BUSINESSES** projects...



## Worcestershire Business Central

- £250,000 investment in development of Worcestershire Business Central
- Focus on:
  - Increased business engagement
  - Reduction in duplication
  - Delivering EU funded business support
  - Connection with National offer





# Key messages for Our **BUSINESSES** projects...



## **Vale Park, Evesham**

- Existing business park with high quality businesses i.e. Walsh Mushrooms, Vale Fresco, etc.
- 30 acre development site in public ownership
- Only Food Enterprise Zone in the West Midlands, one of 17 nationally
- Local Development Order being developed to establish future supported uses relating to the food and drink sectors.



# Growth Deal 2....Total now stands at £54.2m



A further £7.2m was allocated in January 2015 to fund:

- **Business Growth Grants** building on the success of existing schemes such as the Worcestershire Expansion Fund and Redundant Building Grants
- **Skills Capital Fund** to invest in college and training provider capital programmes to include new buildings and refurbishments
- **Infrastructure Fund** to invest in accessing and servicing commercial and housing developments.



# Key messages of Our PLACE funded projects ..



## Cathedral Square Worcester



Our ten year plan for jobs, growth and the economy



# EU programme



- 60m euro programme for Worcestershire
  - With priority areas for investment
  - research and innovation
  - supporting small and medium enterprises
  - creating a low carbon economy
  - increasing labour market participation
  - promoting social inclusion
  - developing people's skills
  - supporting micro and small rural business
  - investing in small scale renewable and broadband investments
  - supporting tourism activities

# Enterprise Zone Bid

